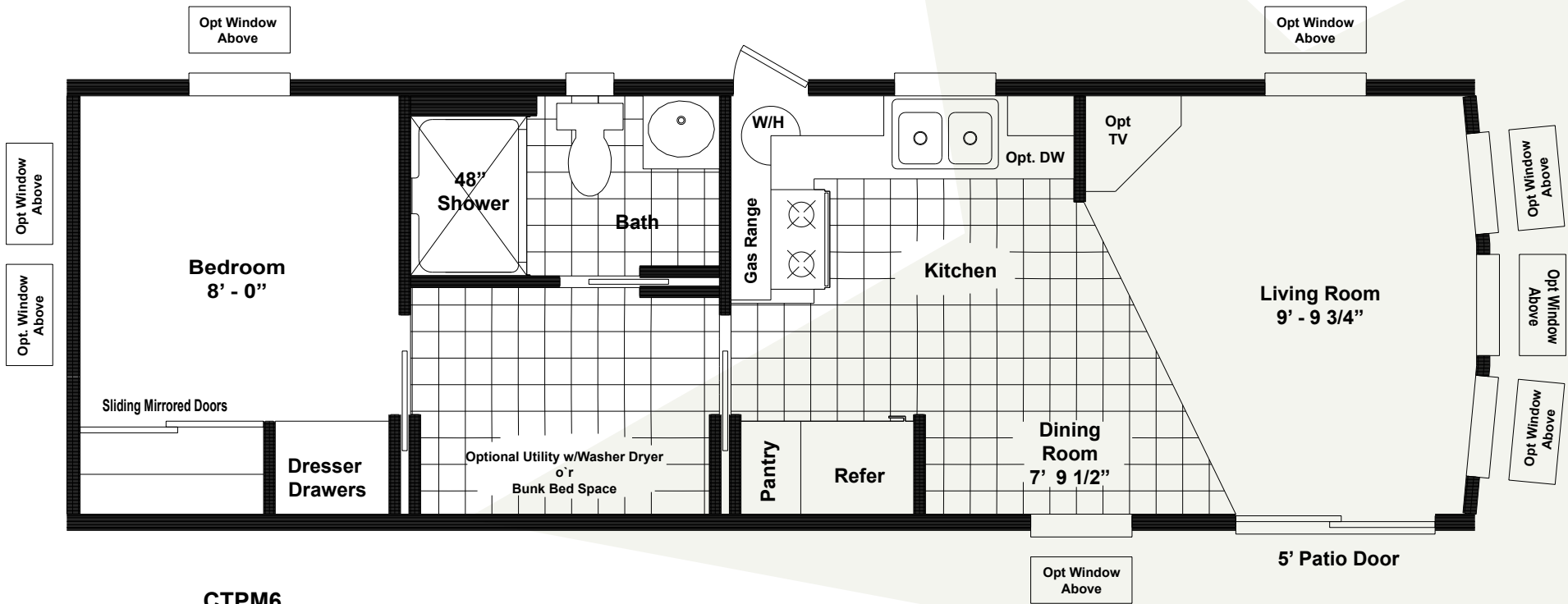


# MODEL CTPM6



**CTPM6**  
11' 2 " X 35 ' 4 "  
397 Square Feet



*Excellence in construction. That's our promise*

PARK MODEL HOMES BY CAVCO TEXAS

# STANDARD FEATURES

## Construction

- 8' Sidewalls
- Screws not nails
- 2X6 #2 floor joists installed 16" OC
- 4'X8' tongue & groove OSB floor decking
- Detachable hitch
- 2 x 4 exterior walls 16' OC
- 12500# coupler
- Fully extruded I beam 96" OC

## Kitchen

- Rolled countertops w/backsplash
- Stainless steel kitchen sink
- 16CF frost free refrigerator
- Deluxe gas stove
- Single lever metal faucet
- Residential style cabinets w/sturdy hidden hinges

## Exterior

- Vinyl exterior siding
- 20 year shingle
- 5' thermal paned patio door
- 30" x 60" thermal paned windows
- Triple bay window in living room

## Interior

- 2" mini blinds throughout
- Mirrored wardrobe doors bedroom
- Built in bureau in bedroom
- Floor mounted doorstops
- Durable 1/2" vinyl covered sheetrock
- Valances throughout (not bathroom)
- Textured ceiling finish over 1/2" sheetrock
- Residential white 6-panel interior doors
- 16 oz. carpet over re-bond pad
- Double wired shelves

## Bathroom

- Porcelain sink
- 48" shower with glass doors
- Bar light fixture over sink
- Single lever metal faucet
- House type commode

## Utilities

- 20 gallon fast recovery water heater
- R-11 fiberglass blanket floor insulation
- R-11 fiberglass exterior wall insulation
- R-21 blown ceiling insulation
- 3/4" Pex water supply lines on 1/2" riser
- 50 Amp service with power cord
- Vented and wired for heat/air

IMPORTANT: Because we continuously update and modify Cavco products it is important for you to know that our brochures and literature are for illustrative purposes only. All information contained herein may vary from the actual home we build. Dimensions are nominal and length and width measurements are from exterior wall to exterior wall. The right is reserved to make changes at any time, without notice or obligation, in prices, colors, materials, specifications, features and models. Please check with your retailer for specific information about the home you select. (Add approximately four feet to determine transportable length.) ©2008 Cavco Industries, Inc. | All Rights Reserved | [www.cavco.com](http://www.cavco.com)



[www.cavcohomes.com/littlehero](http://www.cavcohomes.com/littlehero)

2301 North Highway 46 | Seguin, Texas  
Phone: (877)-TX-CAVCO or (877) 892-2826 | Fax (830) 379-0013

[www.cavcohomes.com/texas](http://www.cavcohomes.com/texas)

©2010 Cavco Industries, Inc. All Rights Reserved

