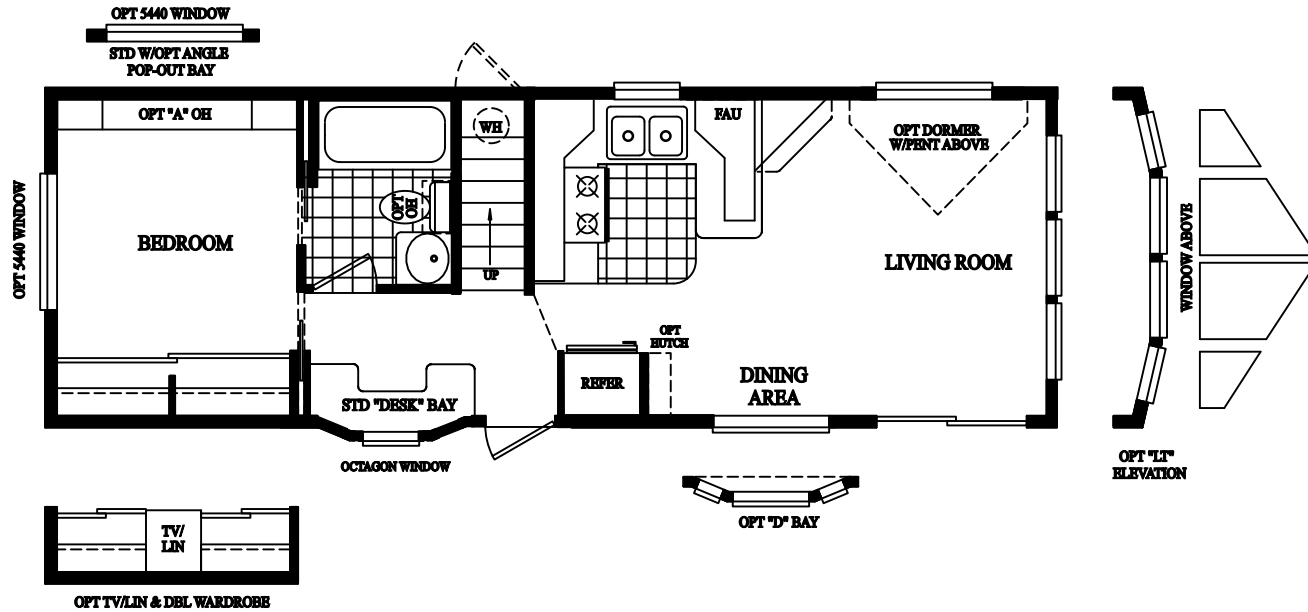
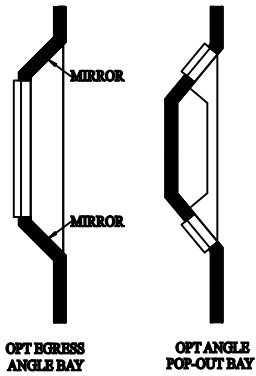
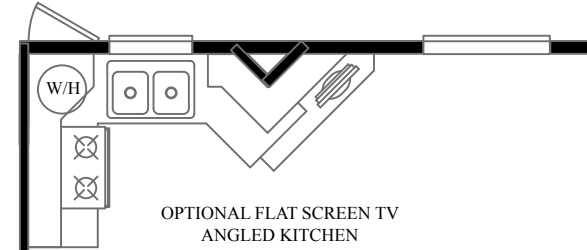
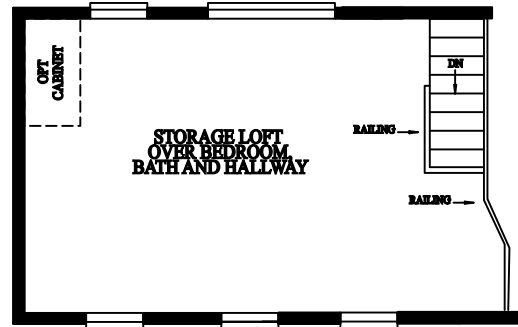


Cavco LOFTS



2008
MODEL: 9012LT ALTERNATE

EXPERIENCE LOFT LIVING™

Built By:

CAVCO
Specialty

Cavco
PARK HOMES & CABINS™

STANDARD FEATURES

INTERIOR

- Tape and texture throughout with rounded corners
- Cathedral ceilings throughout except loft area
- White interior passage and pocket doors with heavy duty hardware
- Drapes valances with mini blinds
- Shaw upgraded carpeting with padding and tack strip
- High grade "Congoleum" linoleum in kitchen and bathroom
- Upgrade lighting package
- Smoke detector
- Fire extinguisher
- LP Leak Gas Detector
- Heavy steel welded and powdered coated loft railing

KITCHEN

- General Electric 30" gas range
- General Electric 15.8 cu. ft. double door frost free refrigerator
- 30" range hood with exhaust fan and light
- Choice of cabinet woodgrains
- Upgraded raised panel cabinet doors
- Choice of upgraded cabinet pulls
- Drawers with double steel roller guides
- Laminate countertops throughout
- Satin finish single lever kitchen faucet with spray
- Extra large composite kitchen sink
- Concealed cabinet door hinges
- Matching woodgrain overhead cabinet interiors

BATHROOM

- Lasco fiberglass one piece tub/shower
- Satin finish single lever lavy faucet
- Satin finish single lever tub diverter with shower head
- Satin towel bar and tissue holder

- Safety mirror over lavy with 18" triple bulb satin light bar
- Marble bowl lavy sink

BEDROOM

- Full width wardrobe with sliding doors
- Single drawers below wardrobe
- Dresser with overhead cabinet (per floorplan)
- 54" x 40" egress window

EXTERIOR

- Architectural Shingled Roof
- Horizontal Cemplank Siding
- 9-light rear door with deadbolt
- White exterior lights at each door
- White framed dual glaze windows throughout
- White framed dual glaze sliding glass door
- Front, rear and side eaves
- Exterior GFI receptacle by sliding glass door

PLUMBING, ELECTRICAL, HEATING & INSULATION

- PEX waterlines with low point drain
- Residential style U.L. approved electrical devices throughout
- 50 amp exterior main panel service with supply cord
- 20 gallon fast recovery electric water heater
- Easy touch rocker light switches throughout
- 40,000 BTU propane furnace with auto ignition
- R-14 fiberglass floor insulation
- R-11 fiberglass sidewall insulation
- R-33 cellulose blown insulation
- Black iron gas pipe run to front hitch end
- Aluminum heat ducting with coordinated floor registers

- Under sink waterline shut-off valves
- Exterior water heater door on 20 gallon electric water heater
- Interior water heater switch on 20 gallon electric water heater
- Pre-wire for ceiling fan in living room and bedroom (N/A in bedroom with loft above)
- Pre-wire for TV and phone jacks in living room, bedroom and loft
- Dimmer switch in dining room

CONSTRUCTION

- Full 10" I-beam chassis construction with 4 axles
- Transverse 2" x 6" #2 or better fir floor joists 16" O.C.
- Detachable hitch from main chassis
- Woven simplex underbelly material
- 8' x 12' high density floor decking
- Full overheight sidewalls in cathedral area
- 2" x 4" sidewalls 16" O.C.
- Pre-engineered 80lb. scissor trusses 16" O.C.
- Nominal 9/12 pitch roof in cathedral area, 2/12 in loft area
- 30 gauge steel strapping for truss to sidewall and floor to sidewall strength
- RPTIA approved
- ANSI approved

Revised 10-15-07

IMPORTANT: Because we continuously update and modify Cavco products it is important for you to know that our brochures and literature are for illustrative purposes only. All information contained herein may vary from the actual home we build. Dimensions are nominal and length and width measurements are from exterior wall to exterior wall. The right is reserved to make changes at any time, without notice or obligation, in prices, colors, materials, specifications, features and models. Please check with your retailer for specific information about the home you select. (Add approximately four feet to determine transportable length.)

©2007 Cavco Industries, Inc. | All Rights Reserved | www.cavco.com

