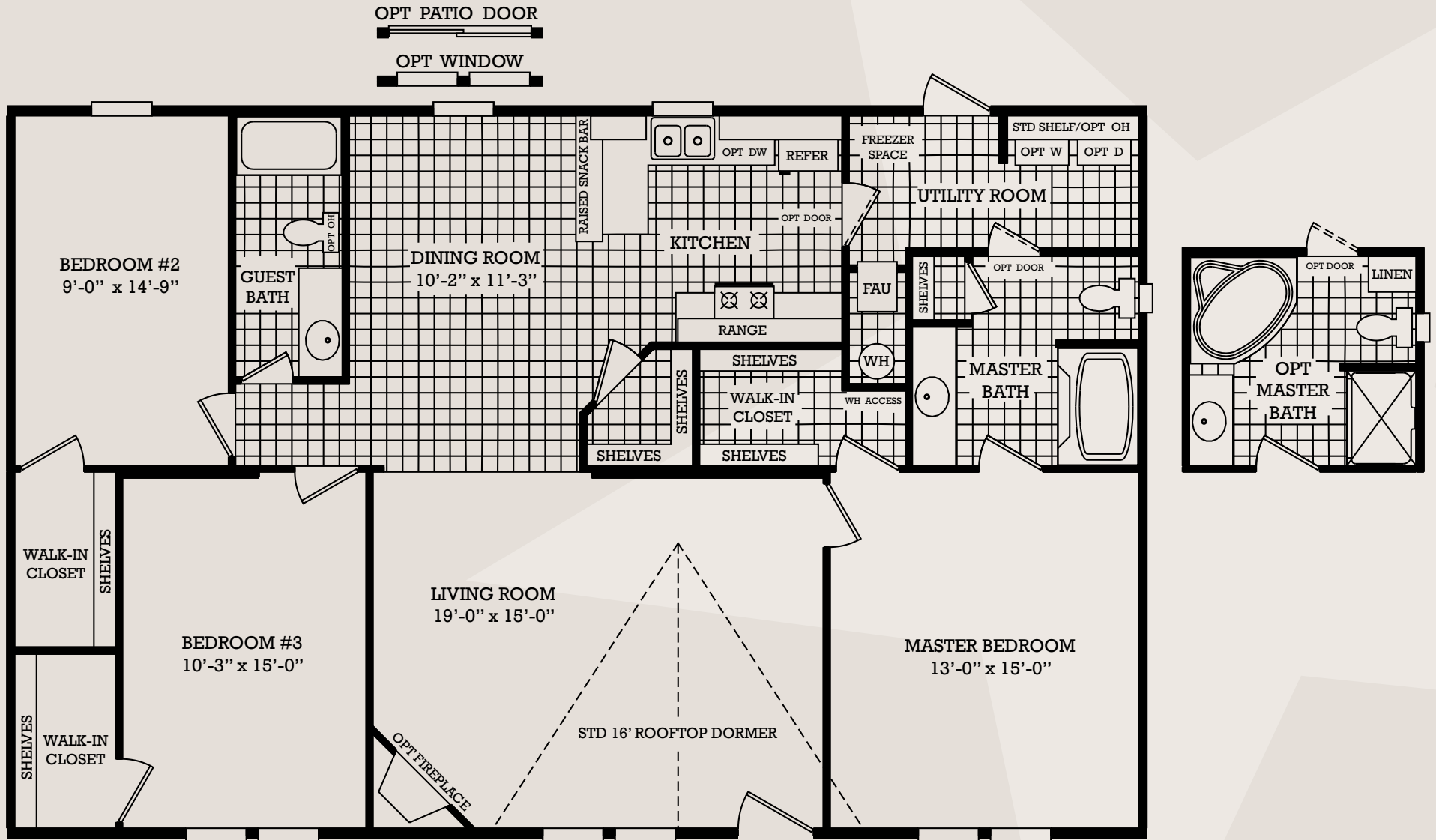


MODEL 32481R

3 bedroom | 2 bath | 1472 square feet



Iron Ranch
CAVCO HOMES OF TEXAS

Excellence in construction. That's our promise.

STANDARD FEATURES

CONSTRUCTION

- full I-beam chassis with full-length outriggers
- detachable Hitch
- 2 X 6 #2 floor joists installed 16 inch on center
- sturdy 4' X 8' tongue-and-groove OSB floor decking
- full-length LVL ridge beam

KITCHEN

- shelves in cabinets
- nationally serviced General Electric appliances
- rolled-edge countertop with backsplash
- residential cabinet doors with knobs and hidden hinges
- durable stainless steel kitchen sink.

EXTERIOR

- vinyl exterior siding
- 38 X 80 inch steel front door with attached storm
- rear door with 10" window
- deadbolt locksets on all entry doors
- larger 30 X 60 inch windows
- shutters installed on the front side
- fully-vented Hardi eave and soffit

BEDROOMS

- spacious closets with double wire shelves throughout
- 2-bulb ceiling light with attractive glass globe
- attractive nickel door locksets and hardware

INTERIOR

- durable ½ inch sheetrock
- full-length drapes with valances in living room
- attractive cathedral ceilings throughout
- textured ceiling finish over ½ inch sheetrock
- residential white 6-panel interior doors on heavy duty hinges
- wire and brace for ceiling fans in living room and master bedroom
- 1-inch mini blinds installed throughout.
- durable vinyl floor in kitchen, master bath and utility room
- 16 oz. carpet in living areas over rebond carpet pad

UTILITIES

- 30-gallon electric water heater
- R-11 fiberglass blanket floor insulation
- R-11 fiberglass batten exterior wall insulation

- R-21 blown cellulose ceiling insulation
- 200-amp interior panel box
- 8 wire thermostat
- 3/4" Pex water supply lines with ½ inch risers to all fixtures
- master water shut off valve
- plumb, wire and vent for washer and dryer
- shelf over washer and dryer area

BATHROOM

- chrome vanity faucets
- residential ceramic round bowl commode
- shower doors on all showers
- one-piece tub surround on all tubs
- bar light fixtures over each sink
- exhaust fan in each bathroom

POPULAR OPTIONS

- cemplank exterior siding
- upgraded GE appliances
- rebond ½ inch carpet pad, 25 oz carpet
- wind zone 2 and 3
- thermal zone 2 and 3
- self-storing storm windows
- upgraded insulation package
- total gas service
- 50-gallon electric water heater
- fireplace
- ceiling fans installed
- plywood floor decking

IMPORTANT: Because we continuously update and modify Cavco products it is important for you to know that our brochures and literature are for illustrative purposes only. All information contained herein may vary from the actual home we build. Dimensions are nominal and length and width measurements are from exterior wall to exterior wall. The right is reserved to make changes at any time, without notice or obligation, in prices, colors, materials, specifications, features and models. Please check with your retailer for specific information about the home you select. (Add approximately four feet to determine transportable length.) ©2008 Cavco Industries, Inc. | All Rights Reserved | www.cavco.com

Iron Ranch

CAVCO HOMES OF TEXAS

Excellence in construction. That's our promise.

2301 North Highway 46 | Seguin, Texas
Phone: (877)-TX-CAVCO or (877) 892-2826 | Fax (830) 379-0013
www.cavcohomes.com/texas

©2008 Cavco Homes of Texas, Inc. All Rights Reserved

